



SMSTM

TOOL HOLDER
CATALOGUE - 2018



01	APPLICATION	01
02	HYDRAULIC CHUCK - HCS	02
03	HYDRAULIC CHUCK - HSK, MULTI MILLING CHUCK - MMC	03
04	COLLET CHUCK - CHE	04
05	COLLET CHUCK - CHE & ACCESSORIES for ER COLLET CHUCKS	05
06	ER SPRING COLLET	06
07	FACE MILL HOLDERS - MODEL FMC	07
08	SIDE LOCK HOLDERS - MODEL SL/SLA	08
09	MORSE TAPER HOLDERS - MODEL MTA	09
10	DRILL CHUCK ARBOR - JTA & PULL STUD	10
11	BORING BARS - BSA & BSB	11 & 12
12	BORING BARS - BCA	13 & 14
13	FINE BOARING BAR - FBC	15
14	NON REVERSIBLE TAPPING ATTACHMENT - QCSFL	16
15	UNIVERSAL QUICK CHANGE DRILLING & FLOATING ADAPTORS MODEL : TF, KD & KF	17
16	UNIVERSAL QUICK CHANGE TAPPING ADAPTORS MODEL : KT, QA & QASB	18
17	FLOATING REAMER HOLDER MODEL : FH/Tr., FH/MT, FHK-Tr.	19
18	COLLET CHUCK & Tr. SHANK & ST SH	20
19	ADJUSTABLE ADAPTORS - MODEL : D & H & F	21 & 22
20	HARDNESS TESTER MACHINE	23
21	SHANK DETAIL	24 & 25
22	PRECISION INDEXABLE TOOLINGS	26 & 27



“SMS” Hydraulic Chucks

A new way of tool holding with highest accuracy. The Hydraulic chucks are almost unbeatable in their combination of power and precision. Precision solution for manufacturing process for High speed & fine milling, precision reaming, parallel stroke milling, Boring & Chamfering & Tool Grinding.

“SMS” Multi Milling Chucks:

It has extremely rigid clamping. Straight bushing will grip the end mill evenly across the end mill shank. This provides a gripping force twenty times greater than a standard tapered collet. Flats and end mill shank depressions will not distort the milling chuck bore.

QCSFL:

For Tapping operation on Radial drilling machines, Reversible drilling and Tapping machines.

TF/KD/KT:

For Drilling, Counter boring, Chamfering, Reaming and Tapping operations on Pillar Drills, Radial drills and Boring machines.

Automotive Adjustable Adapter Assemblies:

Multiple spindles require the accuracy of precision Trapezoidal Threads and the concentricity of a precisely ground O.D. & I.D. All adapters are produced to precise automotive standards to maintain maximum spindle performance and minimize tool run-out. The lock nut provides the positive positioning desired in the spindle.

Floating Holder:

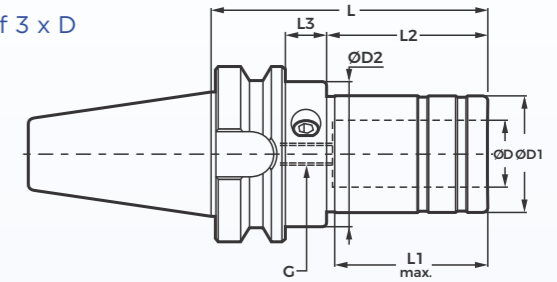
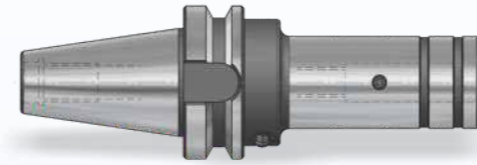
For reaming operations on single and multi-spindle machines, transfer lines and special purpose machines.

Terms & Conditions:

Minimum Order : Qty. 05 Pcs / size
 Taxes : Packing Charges 2% + Freight + SGST+CGST or IGST
 Terms of Payment : 100% against Proforma Invoice.
 Ex-works : Bileshwarpura.

Shank like CAT.ANSI / DIN / ISO are available.

Taper Angle Class AT2
 Maximum Run-Out of the face & Dia to the external taper 0.005mm at distance of 3 x D
 Balanced to G2.5@25,000 rpm

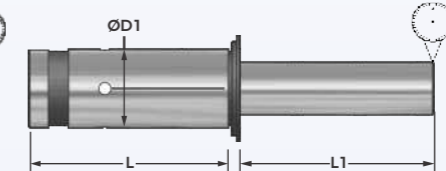
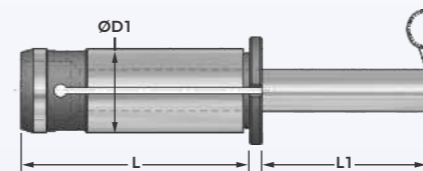


Model	Ordering Number	ØD	ØD1	ØD2	L	L1	L2	L3	G	
BT30/HCS 20-100	68102020	20	42	52	100	56	58	15	M8X1	Tk20
BT40/HCS 20-100	68122020	20	42	52	100	56	58	15	M8X1	TK20
BT40/HCS 32-115	68123223	32	60	52	115	70	73	15	M8X1	TK32
BT50/HCS 20-100	68142020	20	42	52	100	56	58	15	M8X1	TK20
BT50/HCS 32-125	68143225	32	60	52	125	70	73	15	M8X1	TK32

NOTE: Please make sure to use "SMS" make torque key for tightening. Do not use Allen key to tighten.

COLLECT FOR MULTIMILLING CHUCK (MMC)

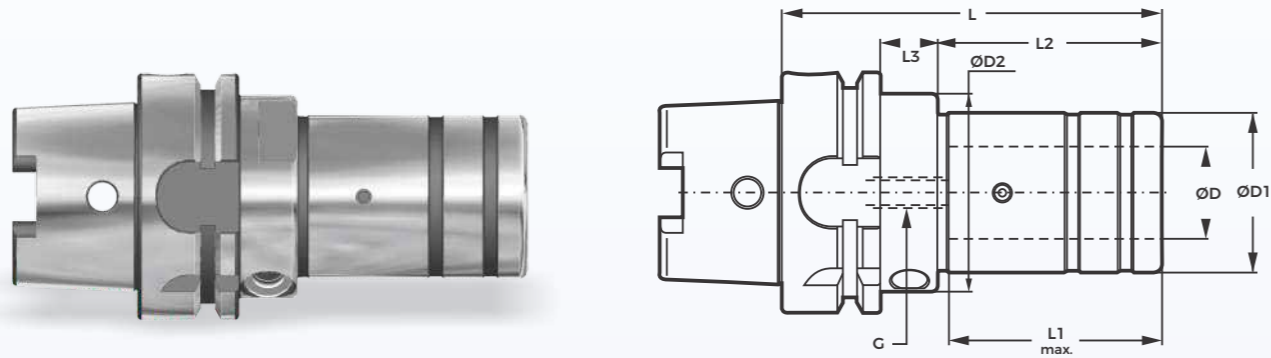
COLLECT FOR HYDRAULIC CHUCK (HCS)



Size MC/HCC	ØD1	L	L1	Run Out µm
20	20	50.5	ØD x 3	0.005
32	32	60.5		

Model	Ordering Number	Model	Ordering Number	Model	Ordering Number	Model	Ordering Number
MC20-03	95420030	MC20-10	95420100	MC32-03	95432030	MC32-15	95432150
HCC20-03	954C220030	HCC20-10	954C20100	HCC32-03	954C32030	HCC32-15	954C32150
MC20-04	95420040	MC20-11	95420110	MC32-04	95432040	MC32-16	95432160
HCC20-04	954C20040	HCC20-11	954C20110	HCC32-04	954C32040	HCC32-16	954C32160
MC20-05	95420050	MC20-12	95420120	MC32-05	95432050	MC32-17	95432170
HCC20-05	954C20050	HCC20-12	954C20120	HCC32-05	954C32050	HCC32-17	954C32170
MC20-06	95420060	MC20-13	95420130	MC32-06	95432060	MC32-18	95432180
HCC20-06	954C20060	HCC20-13	954C20130	HCC32-06	954C32060	HCC32-18	954C32180
MC20-07	95420070	MC20-14	95420140	MC32-07	95432070	MC32-19	95432190
HCC20-07	954C20070	HCC20-14	954C20140	HCC32-07	954C32070	HCC32-19	954C32190
MC20-08	95420080	MC20-15	95420150	MC32-08	95432080	MC32-20	95432200
HCC20-08	954C20080	HCC20-15	954C20150	HCC32-08	954C32080	HCC32-20	954C32200
MC20-09	95420090	MC20-16	95420160	MC32-09	95432090	MC32-21	95432210
HCC20-09	954C20090	HCC20-16	954C20160	HCC32-09	954C32090	HCC32-21	954C32210
				MC32-10	95432100	MC32-22	95432220
				HCC32-10	954C32100	HCC32-22	954C32220
				MC32-11	95432110	MC32-23	95432230
				HCC32-11	954C32110	HCC32-23	954C32230
				MC32-12	95432120	MC32-24	95432240
				HCC32-12	954C32120	HCC32-24	954C32240
				MC32-13	95432130	MC32-25	95432250
				HCC32-13	954C32130	HCC32-25	954C32250
				MC32-14	95432140		
				HCC32-14	954C32140		

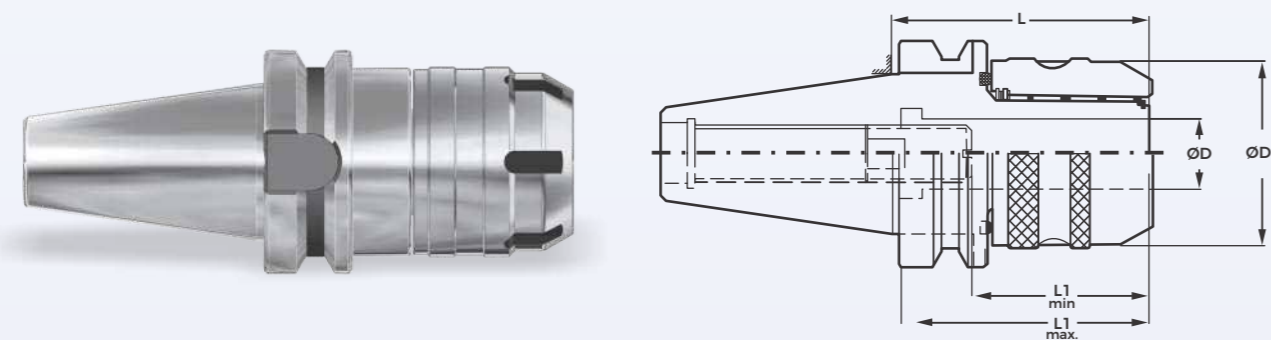
Taper Angle Class AT2
 Maximum Run-Out of the face & Dia
 to the external taper 0.005mm at distance of 3 x D
 Balanced to G2.5 @ 25,000rpm



Model	Ordering Number	ØD	ØD1	ØD2	L	L1	L2	L3	G	
HSK50A/HCS 08-60	68730812	08	28	50	60	40	30	-	M6X1	Tk20
HSK50A/HCS 10-75	68731015	10	30	50	75	40	35	-	M6X1	TK20
HSK50A/HCS 12-75	68731215	12	32	50	75	50	45	-	M8X1	TK20
HSK63A/HCS 20-100	68742020	20	42	52	100	56	58	15	M8X1	TK20
HSK63A/HCS 32-115	68743223	32	60	52	115	70	73	15	M8X1	TK32

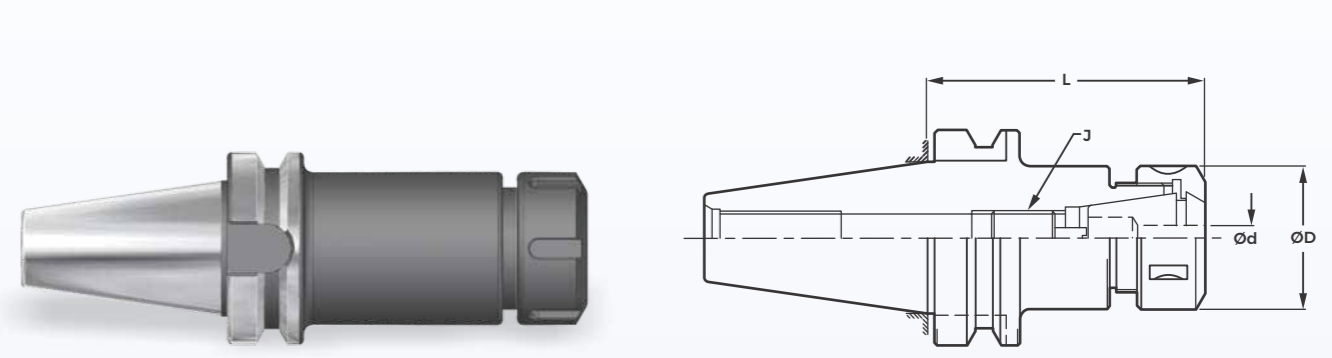
NOTE: Please make sure to use "SMS" make torque key for tightening. Do not use Allen key to tighten.

Maximum Run-Out of the face & Dia
 to the external taper 0.005mm at distance of 3 X D
 Balanced to G2.5@25,000rpm



Model	Ordering Number	Clamping Capacity	Suitable Collet	ØD	ØD1	L	L1 min	L1 max	Spanner
BT30/MMC20-80	97102016	3 - 16mm	MC 20	20	53	80	50	70	ER32
BT40/MMC20-80	97122016	3 - 16mm	MC 20	20	53	80	50	70	ER32
BT40/MMC20-120	97122024	3 - 16mm	MC 20	20	53	120	50	70	ER32
BT40/MMC32-90	97123218	3 - 25mm	MC 32	32	74	90	60	75	ER40
BT40/MMC32-120	97123224	3 - 25mm	MC 32	32	74	120	60	75	ER40
BT50/MMC20-80	97142016	3 - 16mm	MC 20	20	53	80	50	70	ER32
BT50/MMC20-120	97142024	3 - 16mm	MC 20	20	53	120	50	70	ER32
BT50/MMC32-90	97143218	3 - 25mm	MC 32	32	74	90	60	75	ER40
BT50/MMC32-120	97143224	3 - 25mm	MC 32	32	74	120	60	75	ER40

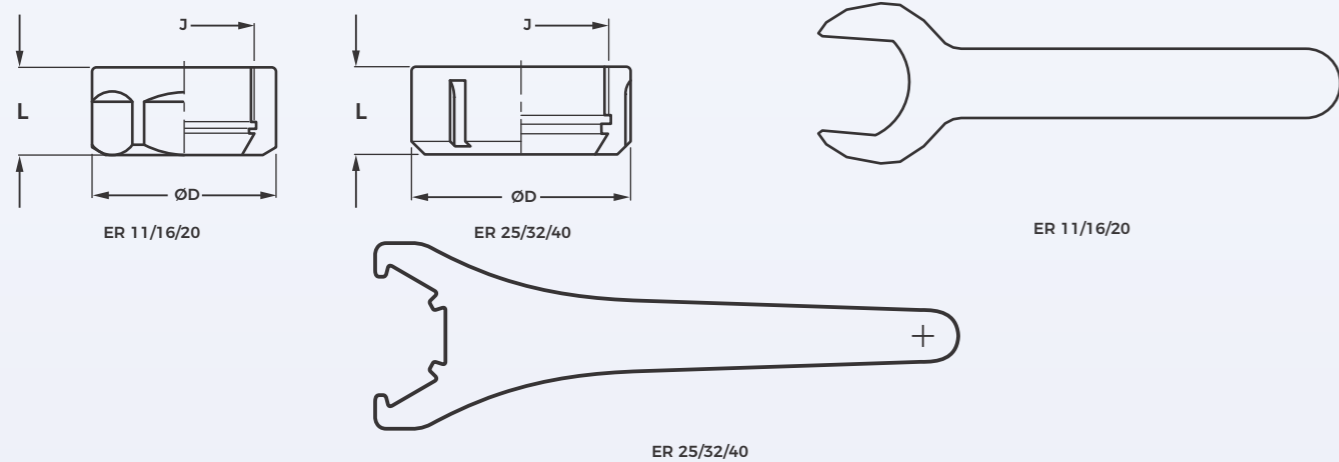
Taper Angle Class AT2
 Maximum Run-Out of the internal taper in
 relation to the external taper 0.005mm
 Balanced to G2.5@25,000rpm



Model	Ordering Number	Suitable ER Collet Size	Ø D Range	J	ØD	L
BT30/CHE 11-70	87210014	11	3 - 07	M 8x1.25	19	70
BT30/CHE 11-100	87210020					100
BT30/CHE 11-120	87210024					120
BT30/CHE 16-70	87210114	16	3 - 10	M10x1.50	28	70
BT30/CHE 16-100	87210120					100
BT30/CHE 16-120	87210124					120
BT30/CHE 20-70	87210214	20	3 - 13	M12x1.75	34	70
BT30/CHE 20-100	87210220					100
BT30/CHE 20-135	87210227					135
BT30/CHE 25-70	87210314	25	3 - 16	M16x2	42	70
BT30/CHE 25-135	87210327					135
BT30/CHE 32-70	87210414					70
BT40/CHE 11-70	87212014	11	3 - 07	M 8x1.25	19	70
BT40/CHE 11-100	87212020					100
BT40/CHE 11-130	87212026					130
BT40/CHE 16-70	87212114	16	3 - 10	M10x1.50	28	70
BT40/CHE 16-100	87212120					100
BT40/CHE 16-130	87212126					130
BT40/CHE 16-150	87212130					150
BT40/CHE 20-70	87212214	20	3 - 13	M12x1.75	34	70
BT40/CHE 20-100	87212220					100
BT40/CHE 20-150	87212230					150
BT40/CHE 25-70	87212314	25	3 - 16	M16x2	42	70
BT40/CHE 25-100	87212320					100
BT40/CHE 25-150	87212330					150
BT40/CHE 32-70	87212414	32	3 - 20	M18x1.5	50	70
BT40/CHE 32-100	87212420					100
BT40/CHE 32-150	87212430					150
BT40/CHE 40-80	87212516	40	4 - 26	M22x1.5	63	70
BT40/CHE 40-100	87212520					100
BT40/CHE 40-120	87212524					120

Taper Angle Class AT2
Maximum Run-Out of the internal taper in relation to the external taper 0.005mm
Balanced to G2.5@25,000rpm

Model	Ordering Number	Suitable ER Collet Size	Ø D Range	J	Ø D	L
BT50/CHE 16-105	87214121	16	3 - 10	M10 X 1.50	28	105
BT50/CHE 16-165	87214133					165
BT50/CHE 20-105	87214221	20	3 - 13	M12 X 1.75	34	105
BT50/CHE 20-165	87214233					165
BT50/CHE 20-200	87214240	20	3 - 13	M12 X 1.75	34	200
BT50/CHE 25-105	87214321	25	3 - 16	M16 X 2	42	105
BT50/CHE 25-165	87214333					165
BT50/CHE 25-200	87214340	25	3 - 16	M16 X 2	42	200
BT50/CHE 32-105	87214421	32	3 - 20	M18 X 1.50	50	105
BT50/CHE 32-150	87214430					150
BT50/CHE 32-200	87214440					200
BT50/CHE 40-105	87214521	40	4 - 26	M22 X 1.50	63	105
BT50/CHE 40-150	87214530					150
BT50/CHE 40-200	87214540					200



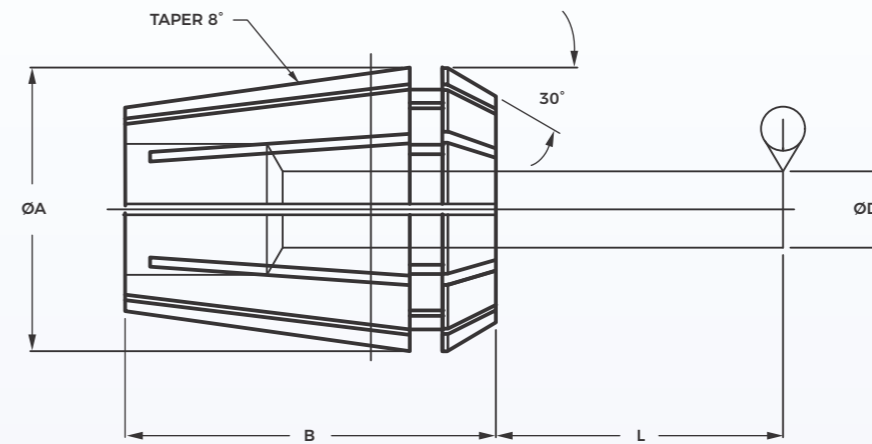
ER - Clamping Nut (DIN 6499)

Model	Ordering Number	ØD	L	J
ER11	87921110	19	11.3	M14x0.75
ER16	87921160	28	17	M22x1.5
ER20	87921200	34	19	M25x1.5
ER25	87921250	42	20	M32x1.5
ER32	87921320	50	22	M40x1.5
ER40	87921400	63	25	M50x1.5

ER - WRENCH

Model	Ordering Number
ER11	87922110
ER16	87922160
ER20	87922200
ER25	87922250
ER32	87922320
ER40	87922400

DIN 6499 (Standard Precision 0.015)



Model	ØA	B	L
ER11	11	18	L=ØD x 3
ER16	16	27.5	
ER20	20	31.5	
ER25	25	34	
ER32	32	40	
ER40	40	46	

ER 11	
Ordering Number	ØD
95220025	2.5 - 2
95220030	3 - 2.5
95220040	4 - 3.5
95220050	5 - 4.5
95220060	6 - 5.5
95220070	7 - 6.5

ER 25	
Ordering Number	ØD
95223030	3 - 2
95223040	4 - 3
95223050	5 - 4
95223060	6 - 5
95223070	7 - 6
95223080	8 - 7
95223090	9 - 8
95223100	10 - 9
95223110	11 - 10
95223120	12 - 11
95223130	13 - 12
95223140	14 - 13
95223150	15 - 14
95223160	16 - 15

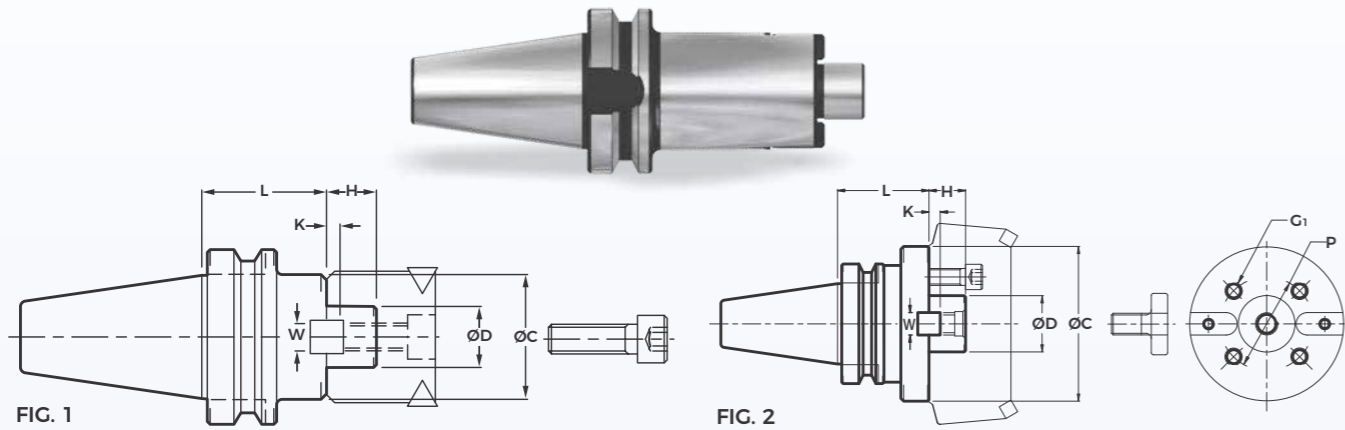
ER 16	
Ordering Number	ØD
95221030	3 - 2
95221040	4 - 3
95221050	5 - 4
95221060	6 - 5
95221070	7 - 6
95221080	8 - 7
95221090	9 - 8
95221100	10 - 9

ER 32	
Ordering Number	ØD
95224030	3 - 2
95224040	4 - 3
95224050	5 - 4
95224060	6 - 5
95224070	7 - 6
95224080	8 - 7
95224090	9 - 8
95224100	10 - 9
95224110	11 - 10
95224120	12 - 11
95224130	13 - 12
95224140	14 - 13
95224150	15 - 14
95224160	16 - 15
95224170	17 - 16
95224180	18 - 17
95224190	19 - 18
95224200	20 - 19

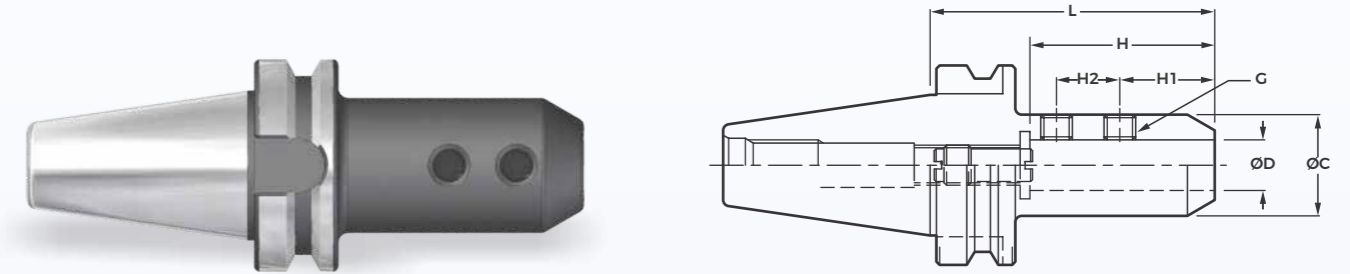
ER 20	
Ordering Number	ØD
95222030	3 - 2
95222040	4 - 3
95222050	5 - 4
95222060	6 - 5
95222070	7 - 6
95222080	8 - 7
95222090	9 - 8
95222100	10 - 9
95222110	11 - 10
95222120	12 - 11
95222130	13 - 12

ER 40	
Ordering Number	ØD
95225030	3 - 2
95225040	4 - 3
95225050	5 - 4
95225060	6 - 5
95225070	7 - 6
95225080	8 - 7
95225090	9 - 8
95225100	10 - 9
95225110	11 - 10
95225120	12 - 11
95225130	13 - 12
95225140	14 - 13
95225150	15 - 14
95225160	16 - 15
95225170	17 - 16
95225180	18 - 17
95225190	19 - 18
95225200	20 - 19
95225210	21 - 20
95225220	22 - 21
95225230	23 - 22
95225240	24 - 23
95225250	25 - 24
95225260	26 - 25

Taper Angle Class AT2
 Maximum Run-Out of the face & Dia
 to the external taper 0.005mm
 Balanced to G2.5@25,000rpm



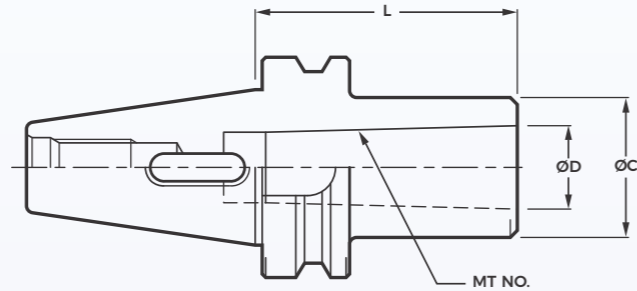
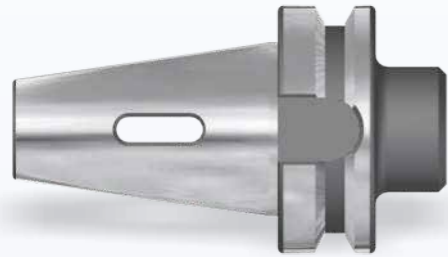
Taper Angle Class AT2
 Maximum Run-Out of the Internal taper in
 relation to the external taper 0.005mm
 Balanced to G2.5@25,000rpm



Model	Ordering Number	Fig. No.	ØD	L	ØC	H	W	K	P.C.D. 4 Holes	CAP SCREW
BT30/FMC 22-45	81102209	1	22	45	45	18	10	5	-	M10X30
BT30/FMC 22-90	81102218	1	22	90	45	18	10	5	-	M10X30
BT30/FMC 27-60	81102712	1	27	60	70	20	12	6	-	M12X35
BT30/FMC 32-60	81103212	1	32	60	85	22	14	7	-	M16X35
BT40/FMC 22-45	81122209	1	22	45	45	18	10	5	-	M10X30
BT40/FMC 22-90	81122218	1	22	90	45	18	10	5	-	M10X30
BT40/FMC 27-60	81122712	1	27	60	70	20	12	6	-	M12X35
BT40/FMC 27-90	81122718	1	27	90	70	20	12	6	-	M12X35
BT40/FMC 32-60	81123212	1	32	60	85	22	14	7	-	M16X35
BT40/FMC 32-75	81123215	1	32	75	85	22	14	7	-	M16X35
BT40/FMB 40-60	80123412	1	40	60	85	26	16	8	-	M20X35
BT40/FMB 40-90	80123418	1	40	90	85	26	16	8	-	M20X35
BT40/FMB 40F-75	80123515	2	40	75	103	26	16	8	66.70	M20X35
BT50/FMC 22-60	81142212	1	22	60	45	18	10	5	-	M10X30
BT50/FMC 22-105	81142221	1	22	105	45	18	10	5	-	M10X30
BT50/FMC 22-150	81142230	1	22	150	45	18	10	5	-	M10X30
BT50/FMC 22-200	81142240	1	22	200	45	18	10	5	-	M10X30
BT50/FMC 27-45	81142709	1	27	45	70	20	12	6	-	M12X35
BT50/FMC 27-90	81142718	1	27	90	70	20	12	6	-	M12X35
BT50/FMC 27-150	81142730	1	27	150	70	20	12	6	-	M12X35
BT50/FMC 27-200	81142730	1	27	200	70	20	12	6	-	M12X35
BT50/FMC 32-60	81143212	1	32	60	70	22	14	7	-	M16X35
BT50/FMC 32-75	81143215	1	32	75	80	22	14	7	-	M16X35
BT50/FMC 32-105	81143221	1	32	105	80	22	14	7	-	M16X35
BT50/FMC 32-150	81143230	1	32	150	80	22	14	7	-	M16X35
BT50/FMC 32-200	81143240	1	32	200	80	22	14	7	-	M16X35
BT50/FMB 40-60	81143412	1	40	60	85	26	14	8	-	M16X35
BT50/FMB 40-75	81143415	1	40	75	85	26	14	8	-	M20X35
BT50/FMB 40-105	81143421	1	40	105	85	26	14	8	-	M20X35
BT50/FMB 40F-75	80143515	2	40	75	103	26	14	8	66.70	M20X35
BT50/FMB 40F-105	80143521	2	40	105	103	26	14	8	66.70	M20X35
BT50/FMB 60F-75	80144515	2	60	75	128	25	25.4	12.5	101.60	-
BT50/FMB 60F-105	80144521	2	60	105	128	25	25.4	12.5	101.60	-

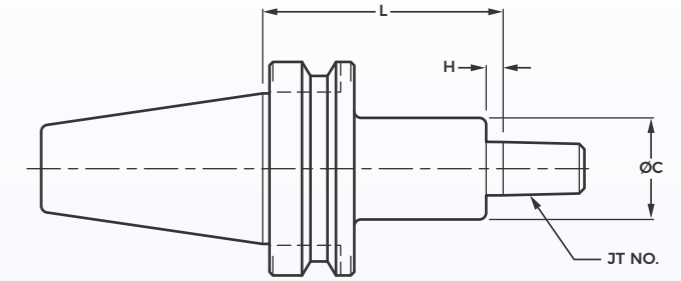
Model	Ordering Number	ØD	L	ØC	H	H1	H2	G
BT30/SL 6-60	84100612	6	60	25	36	18	-	M6X1
BT30/SL 8-60	84100812	8	60	28	36	18	-	M8X1.25
BT30/SL 10-60	84101012	10	60	35	40	20	-	M10X1.5
BT30/SL 12-60	84101212	12	60	42	45	22.5	-	M12X1.75
BT30/SL 16-90	84101618	16	90	48	48	24	-	M14X2
BT30/SL 20-90	84102018	20	90	52	50	25	-	M16X2
BT30/SLA 16-75	85101615	16	75	40	60	25	-	M10X1.5
BT30/SLA 20-75	85102015	20	75	40	60	25	-	M10X1.5
BT30/SLA 25-75	85102515	25	75	46	60	25	-	M12X1.75
BT40/SL 6-75	84120615	6	75	25	36	18	-	M6X1
BT40/SL 8-75	84120815	8	75	28	36	18	-	M8X1.25
BT40/SL 10-75	84121015	10	75	35	40	20	-	M10X1.5
BT40/SL 12-75	84121215	12	75	42	45	22.5	-	M12X1.75
BT40/SL 16-75	84121615	16	75	48	48	24	-	M14X2
BT40/SL 20-75	84122015	20	75	52	50	25	-	M16X2
BT40/SL 25-90	84122518	25	90	65	56	24	25	M18X2
BT40/SL 32-120	84123224	32	120	72	60	24	28	M20X2.5
BT40/SLA 20-90	85122018	20	90	50	60	25	20	M10X1.5
BT40/SLA 25-90	85122518	25	90	50	75	25	20	M12X1.75
BT40/SLA 32-90	85123218	32	90	60	80	30	20	M12X1.75
BT40/SLA 40-90	85124018	40	90	63	80	30	20	M16X2
BT40/SLA 42-90	85124218	42	90	63	80	30	20	M16X2
BT50/SL 12-90	84141218	12	90	42	45	22.5	-	M12X1.75
BT50/SL 16-90	84141618	16	90	48	48	24	-	M14X2
BT50/SL 20-90	84142018	20	90	52	50	25	-	M16X2
BT50/SL 25-105	84142521	25	105	65	56	24	25	M18X2
BT50/SL 32-120	84143224	32	120	72	60	24	28	M20X2
BT50/SL 40-120	84143424	40	120	90	70	30	32	M20X2
BT50/SLA 16-105	85141621	16	105	40	60	25	20	M10X1.5
BT50/SLA 20-105	85142021	20	105	50	75	25	20	M10X1.5
BT50/SLA 25-105	85142521	25	105	50	75	25	20	M12X1.75
BT50/SLA 32-105	85143221	32	105	60	80	30	20	M12X1.75
BT50/SLA 40-105	85144021	40	105	70	80	30	20	M16X2
BT50/SLA 50-105	85145021	50	105	80	80	30	20	M16X2

Taper Angle Class AT2
 Maximum Run-Out of the Internal taper in
 Relation to the external taper 0.005mm
 Balanced to G2.5@25,000rpm

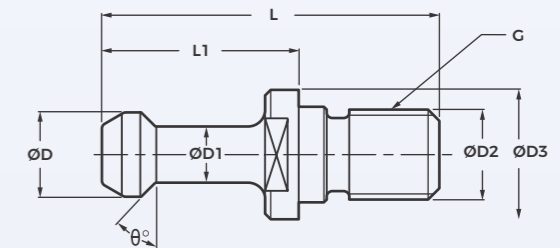
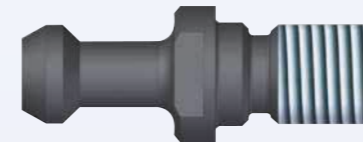


Model	Ordering Number	Female MT	ØD	L	ØC
BT30/MTA 1-45	88010109	1	12.065	45	25
BT30/MTA 2-60	88010212	2	17.780	60	32
BT30/MTA 3-75	88010315	3	23.825	75	40
BT40/MTA 1-45	88012109	1	12.065	45	25
BT40/MTA 1-120	88012124	1	12.065	120	25
BT40/MTA 2-45	88012209	2	17.780	45	32
BT40/MTA 2-120	88012224	2	17.780	120	32
BT40/MTA 3-75	88012315	3	23.825	75	40
BT40/MTA 3-135	88012327	3	23.825	135	40
BT40/MTA 4-90	88012418	4	31.267	90	50
BT40/MTA 4-165	88012433	4	31.267	165	50
BT50/MTA 1-45	88014109	1	12.065	45	25
BT50/MTA 1-120	88014124	1	12.065	120	25
BT50/MTA 1-180	88014136	1	12.065	180	25
BT50/MTA 2-45	88014209	2	17.780	45	32
BT50/MTA 2-120	88014224	2	17.780	120	32
BT50/MTA 2-135	88014227	2	17.780	135	32
BT50/MTA 2-180	88014236	2	17.780	180	32
BT50/MTA 3-45	88014309	3	23.825	45	40
BT50/MTA 3-75	88014315	3	23.825	75	40
BT50/MTA 3-150	88014330	3	23.825	150	40
BT50/MTA 3-180	88014336	3	23.825	180	40
BT50/MTA 4-75	88014415	4	31.267	75	50
BT50/MTA 4-180	88014436	4	31.267	180	50
BT50/MTA 5-105	88014521	5	44.399	105	65
BT50/MTA 5-210	88014542	5	44.399	210	65

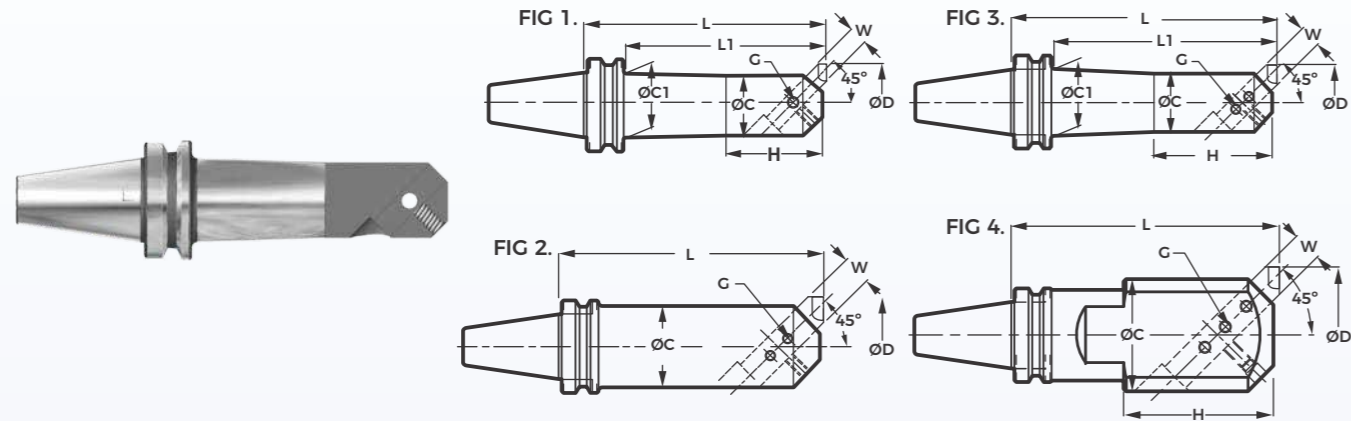
Taper Angle Class AT2
 Maximum Run-Out of the face & Dia
 to the external taper 0.005mm
 Balanced to G2.5@25,000rpm



Model	Ordering Number	J.T. NO. / B. NO.	ØD	L	ØC
BT30/JTA 6-30	88410506	6	17.170	30	30
BT40/JTA1-45	88412109	1	9.754	45	30
BT40/JTA6-45	88412509	6	17.170	45	30
BT40/JTA6-90	88412518	6	17.170	90	30
BT40/B12-45	88412B509	B12	12.065	45	30
BT40/B16-45	88412B609	B16	15.73	45	30
BT40/B18-45	88412B709	B18	17.780	45	30
BT50/JTA1-45	88414109	1	9.754	45	30
BT50/JTA1-90	88414118	1	9.754	90	30
BT50/JTA6-45	88414509	6	17.170	45	30
BT50/JTA6-105	88414521	6	17.170	105	30

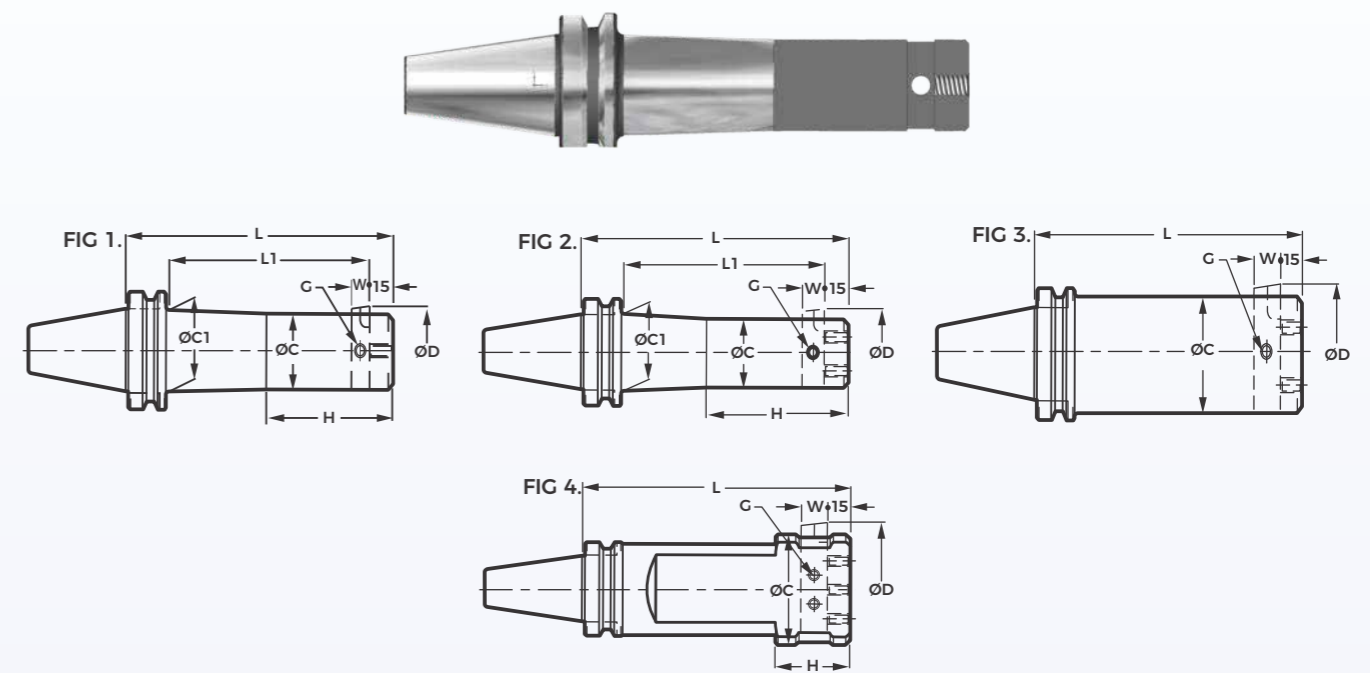


Model	Ordering Number	Suitable for Shanks	Ød	Ød1	Ød2	Ød3	L	L1	G	θ°
MAS 403 I 0° - 45° MAS 403 II 0° - 30°	96,104,500	BT 30	11	7	12.5	16.5	43	23	M12	45°
	96,103,000									30°
	96,124,500	BT 40	15	10	17	23	60	35	M16	45°
96,123,000	30°									
ISO 7388/2 TYPE A DIN 69872	96,144,500	BT 50	23	17	25	38	85	45	M24	45°
	96,143,000									30°
	96,301,500									SK 30
96,321,500	SK 40	19	14	17	23	54	26	M16		
96,341,500	SK 50	28	21	25	36	74	34	M24		
ISO 7388/2 TYPE B ANSI B 5.50	96,224,500	CAT 40	18.95	12.95	17	22.5	44.5	16.4	M16	45°
	96,244,500	CAT 50	29.10	19.6	25	37	65.5	25.55	M24	
For FANUC	96,604,560	NT 30	10	6	13	18	36	20	M12	45°
	96,604,579		10.2	7.9						
	96,604,580		10.4	8						



Model	Ordering Number	Fig. No.	ØD Min.	ØD Max.	L	L1	H	ØC	ØC1	W	Suitable Screw
BT30/BSA25-120	90101324	1	25	38	120	95	35	20	22	8	M6
BT30/BSA30-135	90101527	1	30	42	135	110	40	24	26	8	M6
BT30/BSA38-150	90101930	1	38	52	150	125	50	30	33	10	M8
BT30/BSA42-150	90102130	1	42	56	150	125	60	34	37	10	M8
BT30/BSA50-150	90102530	1	50	65	150	-	65	40	44	12	M10
BT40/BSA 25-135	90121327	1	25	38	135	103	35	20	22	8	M6
BT40/BSA30-165	90121533	1	30	42	165	133	40	24	26	8	M6
BT40/BSA38-180	90121936	1	38	52	180	148	50	30	33	10	M8
BT40/BSA42-210	90122142	1	42	56	210	178	60	34	37	10	M8
BT40/BSA50-165	90122533	1	50	65	165	133	65	40	44	12	M10
BT40/BSA50-210	90122542	1	50	65	210	178	65	40	44	12	M10
BT40/BSA62-165	90123133	1	62	90	165	133	80	50	56	16	M10
BT40/BSA62-225	90123145	1	62	90	225	193	80	50	56	16	M10
BT40/BSA72-165	90123633	2	72	110	165	-	-	60	-	20	M10
BT40/BSA72-225	90123645	2	72	110	225	-	-	60	-	20	M10
BT40/BSA90-165	90124533	3	90	125	165	-	55	75	-	20	M12
BT40/BSA90-210	90124542	3	90	125	210	-	55	75	-	20	M12
BT50/BSA25-135	90141327	1	25	38	135	92	35	20	22	8	M6
BT50/BSA30-165	90141533	1	30	42	165	122	40	24	26	8	M6
BT50/BSA38-180	90141936	1	38	52	180	137	50	30	33	10	M8
BT50/BSA42-210	90142142	1	42	56	210	167	60	34	37	10	M8
BT50/BSA50-180	90142536	1	50	65	180	137	65	40	44	12	M10
BT50/BSA50-240	90142548	1	50	65	240	197	65	40	44	12	M10
BT50/BSA62-195	90143139	1	62	90	195	152	80	50	56	16	M10
BT50/BSA62-270	90143154	1	62	90	270	227	80	50	56	16	M10
BT50/BSA72-195	90143639	2	72	110	195	152	95	60	66	20	M10
BT50/BSA72-285	90143657	2	72	110	285	242	95	60	66	20	M10
BT50/BSA90-210	90144542	2	90	125	210	167	110	75	80	20	M12
BT50/BSA90-300	90144560	2	90	125	300	257	110	75	80	20	M12
BT50/BSA105-195	90145339	3	105	160	195	-	-	90	-	25	M12
BT50/BSA105-285	90145357	2	105	160	285	-	130	90	94	25	M12
BT50/BSA130-255	90146551	4	130	190	255	-	85	110	-	25	M12

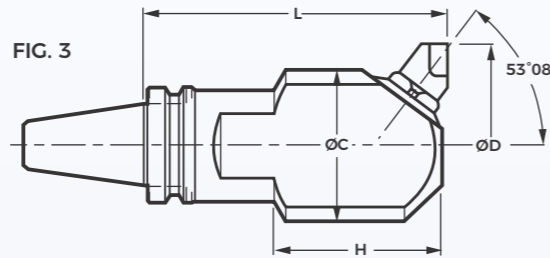
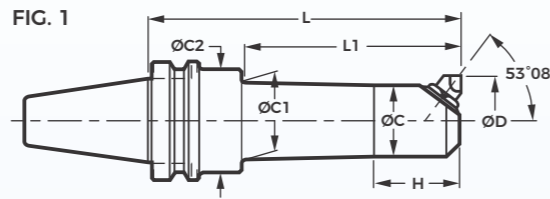
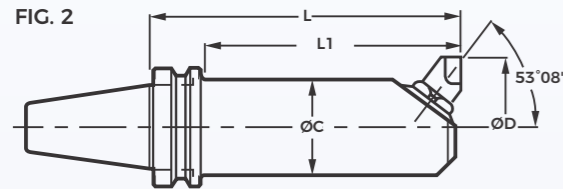
Square tool is not included.



Model	Ordering Number	Fig. No.	ØD Min.	ØD Max.	L	L1	H	ØC	ØC1	W	Suitable Screw
BT30/BSB25-120	91101324	1	25	52	135	95	50	20	22	8	M8
BT30/BSB38-150	91101930	1	38	70	165	125	70	30	32	10	M10
BT30/BSB50-150	91102530	1	50	90	165	-	85	40	44	12	M10
BT40/BSB25-135	91121327	1	25	52	150	103	50	20	22	8	M8
BT40/BSB38-180	91121936	1	38	70	195	148	70	30	32	10	M10
BT40/BSB50-165	91122533	1	50	90	180	133	85	40	44	12	M10
BT40/BSB50-210	91122542	1	50	90	225	178	85	40	44	12	M10
BT40/BSB62-165	91123133	2	62	115	180	133	95	50	56	16	M10
BT40/BSB62-225	91123145	2	62	115	180	133	95	50	56	16	M10
BT40/BSB72-165	91123633	3	72	135	180	-	-	60	-	20	M10
BT40/BSB72-225	91123645	3	72	135	240	-	-	60	-	20	M10
BT40/BSB90-165	91124533	4	90	150	180	-	50	75	-	20	M12
BT40/BSB90-210	91124545	4	90	150	225	-	50	75	-	20	M12
BT50/BSB25-135	91141327	1	25	52	150	92	50	20	22	8	M8
BT50/BSB38-180	91141936	1	38	70	195	137	70	30	32	10	M10
BT50/BSB50-180	91142536	1	50	90	195	137	85	40	44	12	M10
BT50/BSB50-240	91142548	1	50	90	255	197	85	40	44	12	M10
BT50/BSB62-195	91143139	2	62	115	210	152	95	50	56	16	M10
BT50/BSB62-270	91143154	2	62	115	285	227	95	50	56	16	M10
BT50/BSB 72-195	91143639	2	72	135	210	152	110	60	66	20	M10
BT50/BSB72-285	91143657	2	72	135	300	242	110	60	66	20	M10
BT50/BSB90-210	91144542	2	90	150	225	167	130	75	80	20	M12
BT50/BSB90-300	91144560	2	90	150	315	257	130	75	80	20	M12
BT50/BSB105-195	91145339	3	105	190	210	-	-	90	-	25	M12
BT50/BSB105-285	91145357	2	105	190	300	-	150	90	94	25	M12
BT50/BSB130-255	91146551	4	130	260	270	-	60	110	-	25	M12

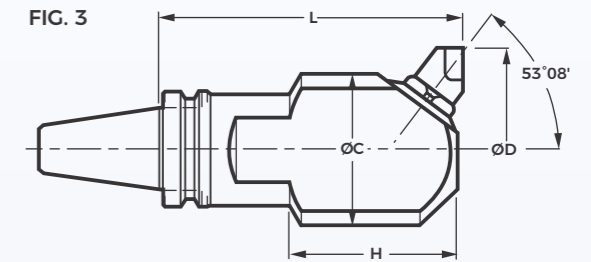
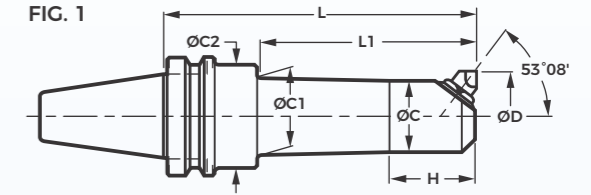
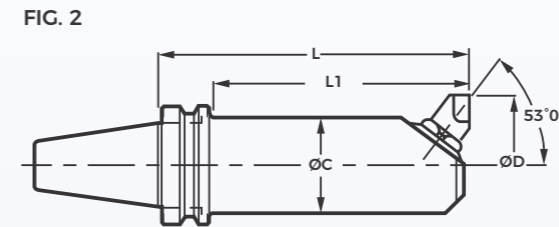
Square tool is not included.

Taper Angle Class AT2



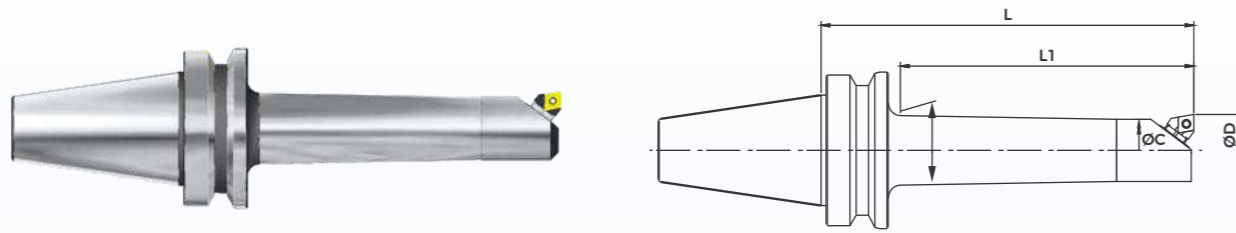
Model	Ordering Number	FIG.	ØD Min.	ØD Max.	L	L1	H	ØC	ØC1	ØC2	Suitable Cartridge
BT30/BCA13.5-105	92100221	1	13.5	16	105	67	15	12	13	44	M1B2F-40
BT30/BCA14.5-105	92100421	1	14.5	17	105	67	18	12	14	44	M1B2F-40
BT30/BCA16-105	92100621	1	16	22.5	105	73	16	14	15	44	M1A2F-40
BT30/BCA19-120	92100924	1	19	23	120	86	23	16	18	44	M2B2F-40
BT30/BCA23-135	92101327	1	23	29	135	105	24	19	22	44	M3B2 CO 6
BT30/BCA29-150	92101930	1	29	41	150	115	30	25	28	44	M3A2 CO 6
BT30/BCA38-150	92103030	1	38	49	150	123	41	33	37	-	M5B2 CO 6
BT40/BCA13.5-105	92120221	1	13.5	16	105	67	15	12	13	44	M1B2F-40
BT40/BCA13.5-180	92120236	1	13.5	16	180	67	15	12	13	44	M1B2F-40
BT40/BCA14.5-105	92120421	1	14.5	17	105	67	15	12	14	44	M1B2F-40
BT40/BCA14.5-180	92120436	1	14.5	17	180	67	15	12	14	44	M1B2F-40
BT40/BCA16-105	92120621	1	16	22.5	105	73	18	14	15	44	M1A2F-40
BT40/BCA16-180	92120636	1	16	22.5	180	73	18	14	15	44	M1A2F-40
BT40/BCA19-120	92120924	1	19	23	120	86	23	16	18	44	M2B2F-40
BT40/BCA19-180	92120936	1	19	23	180	86	23	16	18	44	M2B2F-40
BT40/BCA23-135	92121327	1	23	29	135	105	24	19	22	-	M3B2 CO 6
BT40/BCA23-195	92121339	1	23	29	195	105	24	19	22	44	M3B2 CO 6
BT40/BCA29-150	92121930	1	29	41	150	115	30	25	28	44	M3A2 CO 6
BT40/BCA29-195	92121939	1	29	41	195	115	30	25	28	44	M3A2 CO 6
BT40/BCA38-150	92123030	1	38	49	150	115	41	33	35	55	M5B2 CO 6
BT40/BCA38-195	92123039	1	38	49	195	157	41	33	37	55	M5B2 CO 6
BT40/BCA46-150	92123530	1	46	66	150	115	45	38	41	55	M5A2 CO 6
BT40/BCA46-210	92123542	1	46	66	210	167	45	38	44	55	M5A2 CO 6
BT40/BCA62-165	92124633	2	62	87	165	135	-	51	-	-	M7A2 CO 9
BT40/BCA62-225	92124645	1	62	87	225	184	60	51	57	63	M7A2 CO 9
BT40/BCA83-150	92125630	2	83	108	150	-	-	63	-	-	M7A2 CO 9
BT40/BCA83-225	92125645	2	83	108	225	-	-	63	-	-	M7A2 CO 9
BT40/BCA98-150	92126530	3	98	142	150	-	90	83	-	-	M10A2CO 9

Microbore Cartridge & Spanner not included - order separately

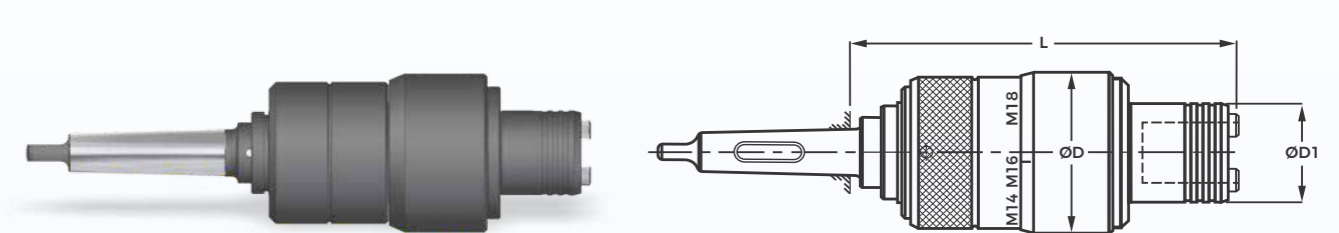


Model	Ordering Number	FIG.	ØD Min.	ØD Max.	L	L1	H	ØC	ØC1	ØC2	Suitable Cartridge
BT50/BCA13.5-120	92140224	1	13.5	16	120	67	15	12	13	44	M1B2F-40
BT50/BCA13.5-195	92140239	1	13.5	16	195	67	15	12	13	44	M1B2F-40
BT50/BCA14.5-120	92140424	1	14.5	17	120	67	15	12	14	44	M1B2F-40
BT50/BCA14.5-195	92140439	1	14.5	17	195	67	15	12	14	44	M1B2F-40
BT50/BCA16-120	92140624	1	16	22.5	120	73	18	14	15	44	M1A2F-40
BT50/BCA16-195	62140639	1	16	22.5	195	73	18	14	15	44	M1A2F-40
BT50/BCA19-135	92140927	1	19	23	135	86	23	16	18	44	M2B2F-40
BT50/BCA19-210	92140942	1	19	23	210	86	23	16	18	44	M2B2F-40
BT50/BCA23-150	92121327	1	23	29	150	105	24	19	22	44	M3B2 CO 6
BT50/BCA23-225	92121339	1	23	29	225	105	24	19	22	44	M3B2 CO 6
BT50/BCA29-165	92121930	1	29	41	165	115	30	25	28	44	M3A2 CO 6
BT50/BCA29-225	92121939	1	29	41	225	115	30	25	28	44	M3A2 CO 6
BT50/BCA38-165	92123030	1	38	49	165	115	41	33	35	55	M5B2 CO 6
BT50/BCA38-225	92123039	1	38	49	225	172	41	33	37	55	M5B2 CO 6
BT50/BCA46-165	92123530	1	46	66	165	115	45	38	41	55	M5A2 CO 6
BT50/BCA46-225	92123542	1	46	66	225	182	45	38	44	-	M5A2 CO 6
BT50/BCA46-255	92123551	1	46	66	255	206	45	38	44	55	M5A2 CO 6
BT50/BCA62-180	92144636	2	62	87	180	137	-	51	-	70	M7A2 CO 9
BT50/BCA62-240	92144648	1	62	87	240	184	60	51	57	70	M7A2 CO 9
BT50/BCA62-330	92144666	1	62	87	330	280	60	51	59	70	M7A2 CO 9
BT50/BCA 83-165	92145633	2	83	108	165	122	-	63	-	-	M7A2 CO 9
BT50/BCA 83-240	92145648	1	83	108	240	197	70	63	70	-	M7A2 CO 9
BT50/BCA 83-345	92145669	1	83	108	345	295	70	63	76	90	M7A2 CO 9
BT50/BCA 98-165	92146533	2	98	142	165	122	-	83	-	-	M10A2 CO 9
BT50/BCA 98-240	92146548	2	98	142	240	197	-	83	92	-	M10A2 CO 9
BT50/BCA 98-345	92146569	1	98	142	345	302	90	83	92	-	M10A2 CO 9
BT50/BCA 132-210	92147542	3	132	176	210	-	65	108	-	-	M10A2 CO 9
BT50/BCA 132-315	92147563	3	132	176	315	-	65	108	-	-	M10A2 CO 9
BT50/BCA 166-225	92148045	3	166	210	225	-	70	142	-	-	M10A2 CO 9
BT50/BCA 166-315	92148063	3	166	210	315	-	70	142	-	-	M10A2 CO 9
BT50/BCA 200-210	92149042	3	200	244	210	-	75	176	-	-	M10A2 CO 9

Microbore Cartridge & Spanner not included - order separately

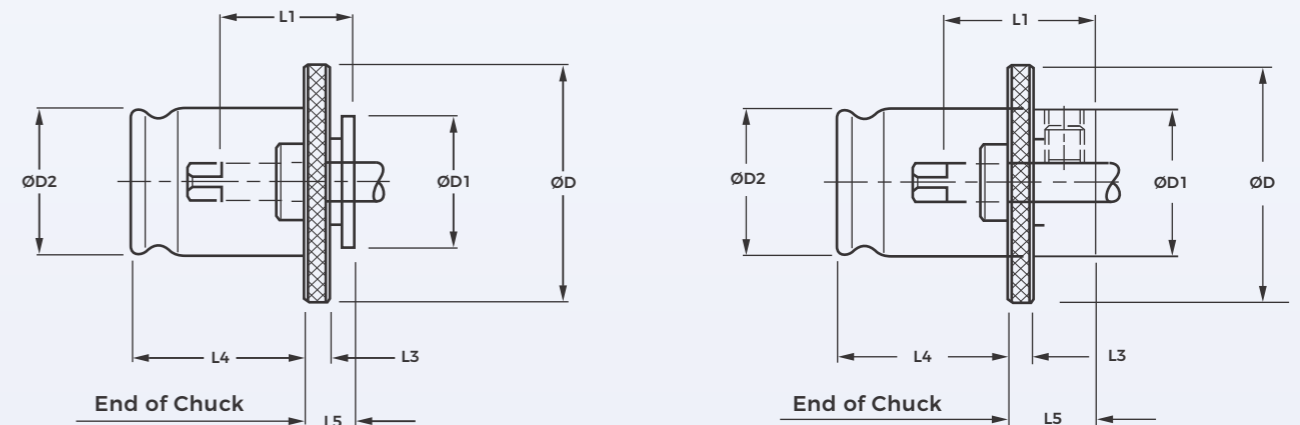


Model	Ordering Number	ØD Min.	ØD Max.	L	L1	ØC	
BT40/FBC29-150	89121530	34	29	150	118	25	FBCAR16-06
BT40/FBC29-225	89121545	34	29	225	193	25	FBCAR16-06
BT40/FBC32-150	89121630	37	32	150	118	28	FBCAR16-06
BT40/FBC32-225	89121645	37	32	225	193	28	FBCAR16-06
BT40/FBC35-150	89121730	40	35	150	118	31	FBCAR16-06
BT40/FBC35-225	89121745	40	35	225	193	31	FBCAR16-06
BT40/FBC38-150	89121930	44	37	150	118	33	FBCAR20-06
BT40/FBC38-225	89121945	44	37	225	193	33	FBCAR20-06
BT40/FBC42-165	89122130	49	42	150	118	38	FBCAR20-06
BT40/FBC42-225	89122145	49	42	225	193	38	FBCAR20-06
BT40/FBC 48-165	89122433	55	48	165	133	44	FBCAR20-06
BT40/FBC 48-225	89122445	55	48	225	193	44	FBCAR20-06
BT40/FBC54-165	89122733	61	54	165	133	50	FBCAR20-06
BT40/FBC 54-225	89122745	61	54	225	193	50	FBCAR20-06
BT40/FBC 60-165	89123033	67	60	165	133	56	FBCAR20-06
BT40/FBC 60-225	89123045	67	60	225	193	56	FBCAR20-06
BT40/FBC 62-165	89123133	77	62	165	133	58	FBCAR22-09
BT40/FBC 62-225	89123145	77	62	225	193	58	FBCAR22-09
BT40/FBC 76-165	89123833	91	76	165	133	72	FBCAR22-09
BT40/FBC 76-225	89123845	91	76	225	193	72	FBCAR22-09
BT50/FBC29-165	89141433	34	29	165	122	25	FBCAR16-06
BT50/FBC29-225	89141445	34	29	225	182	25	FBCAR16-06
BT50/FBC32-165	89141633	37	32	165	122	28	FBCAR16-06
BT50/FBC32-225	89141645	37	32	225	182	28	FBCAR16-06
BT50/FBC35-165	89141733	40	35	165	122	31	FBCAR16-06
BT50/FBC35-225	89141745	40	35	225	182	31	FBCAR16-06
BT50/FBC38-165	89141933	44	37	165	122	33	FBCAR20-06
BT50/FBC38-225	89141945	44	37	225	182	33	FBCAR20-06
BT50/FBC42-165	89142133	49	42	165	122	38	FBCAR20-06
BT50/FBC42-225	89142145	49	42	225	182	38	FBCAR20-06
BT50/FBC48-165	89142433	55	48	165	122	44	FBCAR20-06
BT50/FBC48-225	89142445	55	48	225	182	44	FBCAR20-06
BT50/FBC54-165	89142733	61	54	165	122	50	FBCAR20-06
BT50/FBC54-225	89142745	61	54	225	182	50	FBCAR20-06
BT50/FBC60-165	89143033	67	60	165	122	56	FBCAR20-06
BT50/FBC60-225	89143045	67	60	225	182	56	FBCAR20-06
BT50/FBC62-165	89143133	77	62	165	122	58	FBCAR22-09
BT50/FBC62-240	89143148	77	62	240	197	58	FBCAR22-09
BT50/FBC76-165	89143833	91	76	165	122	72	FBCAR22-09
BT50/FBC76-240	89143848	91	76	240	197	72	FBCAR22-09
BT50/FBC90-165	89144533	105	90	165	122	86	FBCAR22-09
BT50/FBC90-240	89144548	105	90	240	197	86	FBCAR22-09
BT50/FBC104-165	89145233	119	104	165	122	100	FBCAR22-09
BT50/FBC104-240	89145248	119	104	240	197	100	FBCAR22-09



Model	Ordering Number	For Taps	Suitable Adaptors QA - QAL	Length Compensation		Float	ØD	ØD1	L
				Comp	Exp				
QCSFL12/MT2	11601229	M3 - M12	1	10	20	1	58	32	145
QCSFL12/MT3	11601328	M3 - M12	1	10	20	1	58	32	142
QCSFL20/MT3	11602338	M8 - M20	2	10	20	1.5	83	50	190
QCSFL20/MT4	11602438	M8 - M20	2	10	20	1.5	83	50	191
QCSFL30/MT4	11603451	M14 - M30	3	10	30	2	106	72	254
QCSFL30/MT5	11603551	M14 - M30	3	10	30	2	106	72	256
QCSFL42/MT5	11604551	M18 - M42	3	10	30	2	106	72	256

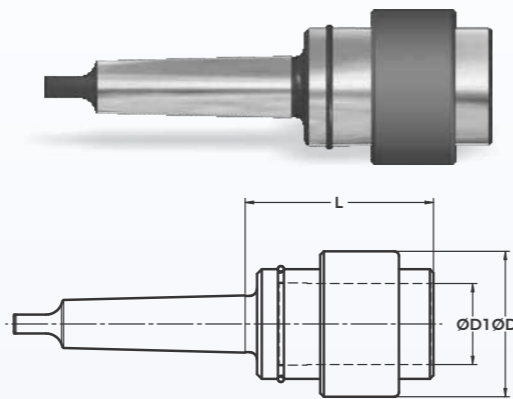
TAPPING ADAPTOR MODEL QA
Without Safety Clutch



Model	Ordering Number	For Taps		Suitable for QCSFL	ØD	ØD1	ØD2	L1	L3	L4	L5
		Thread	Shanks Ø								
QA 1	40, 100...	M3 - M12	3.50-11.30	SIZE 12	30	19	19	17	4	21.5	7
QA 2	40, 200...	M8 - M20	7-18	SIZE 20	48	30	31	30	5	35	11
QA 3	40, 300...	M14 - M30	11-28	SIZE 30	70	48	48	44	6	55.5	14
QAL 3	56, 300...	M33 - M42	>28-36	SIZE 42	70	48	48	55	6	55.5	28

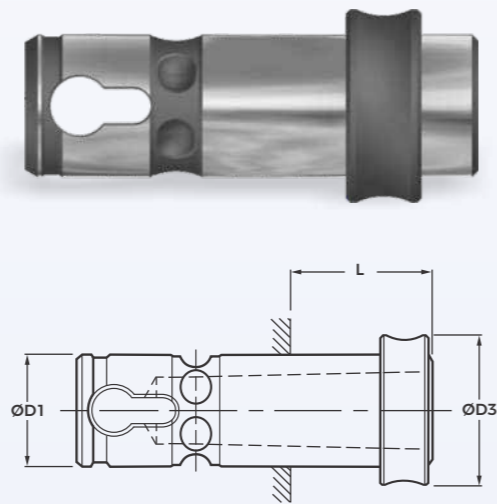
MODEL TF (IS 7824)

Model	Ordering Number	MT NO	L	Suitable Adaptor KDKF/KT	ØD	ØD1
TF1MT1	10001113	1	65.5	SIZE 1	33	18
TF2/MT2	10002215	2	75	SIZE 2	48	26
TF2/MT3	10003215	3	76	SIZE 2	48	26
TF3/MT3	10003317	3	86	SIZE 3	61	34
TF3/MT4	10004317	4	86	SIZE 3	61	34
TF4/MT4	10004424	4	120.5	SIZE 4	82	46
TF4/MT5	10005424	5	120.5	SIZE 4	82	46
TF5/MT5	10005526	5	130.5	SIZE 5	100	60
TF5/MT6	10006526	6	133	SIZE 5	100	60



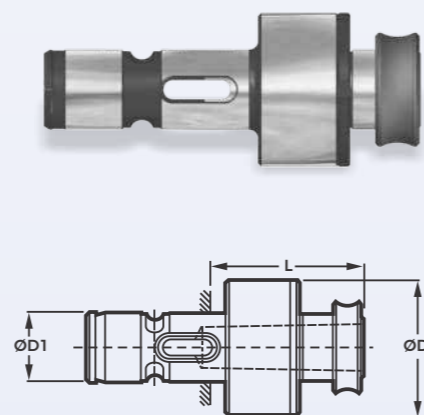
DRILLING ADAPTOR : MODEL : KD / MT

Model	Ordering Number	Female MT No.	Suitable for Chuck	ØD1	ØD3	L
KD1	11101103	1	TF 1	18	28	15
KD2	11101203	1	TF 2	26	37	18
KD2	11102206	2	TF 2	26	37	30
KD3	11101303	1	TF 3	34	46	15
KD3	11102305	2	TF 3	34	46	25
KD3	11103308	3	TF 3	34	46	43
KD4	11101404	1	TF 4	46	58	22
KD4	11102406	2	TF 4	46	58	22
KD4	11103406	3	TF 4	46	58	31
KD4	11104411	4	TF 4	46	58	55
KD5	11102505	2	TF 5	60	73	25
KD5	11103505	3	TF 5	60	73	25
KD5	11104506	4	TF 5	60	73	31
KD5	11105513	5	TF 5	60	73	68

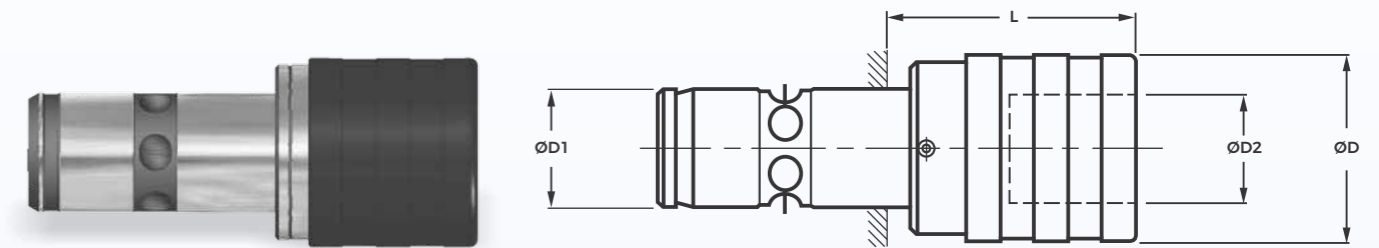


FLOATING ADAPTOR : MODEL : KF / MT

Model	Ordering Number	Suitable Shank	Female Morse Taper	Float Action	ØD	ØD3	L
KF2/MT1	11301210	TF 2	1	1	50	26	54
KF2/MT2	11302213	TF 2	2	1	50	26	63
KF3/MT2	11302312	TF 3	2	1	67	34	60.5
KF3/MT3	11303314	TF 3	3	1	67	34	80
KF4/MT3	11303414	TF 4	3	1.5	78	46	71.5
KF4/MT4	11304419	TF 4	4	1.5	78	46	96.5
KF5/MT4	11304518	TF 5	4	2	102	60	91.5
KF5/MT5	11305524	TF 5	5	2	67	60	118.5

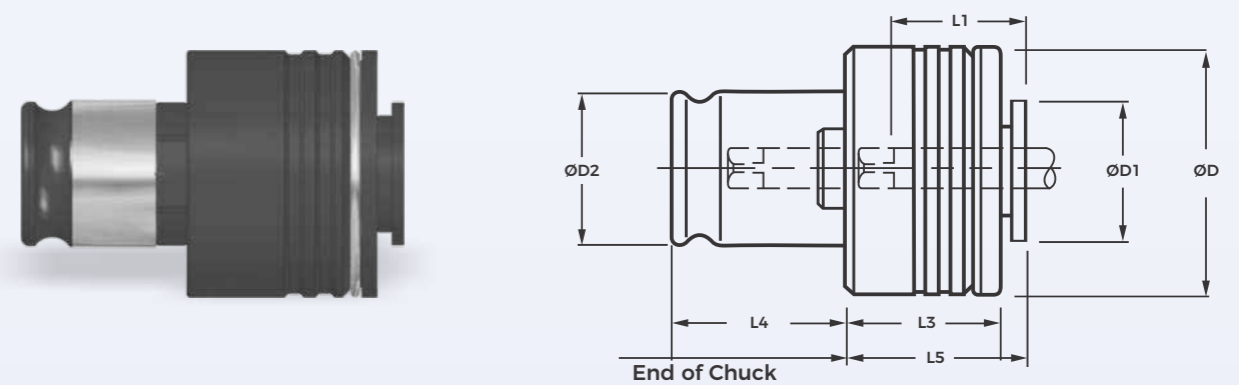


MODEL KT
For tapping with length compensation



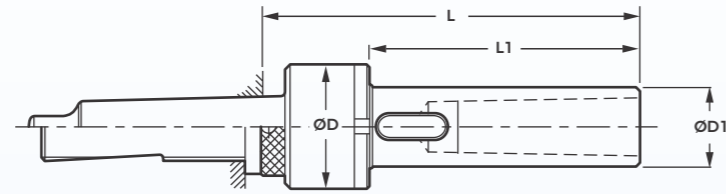
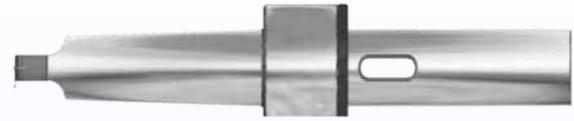
Model	Ordering Number	Suitable Adaptor QA-QASB	For Taps	Suitable For Chuck	Length Compensation Comp	Length Expansion Exp	ØD	ØD1	ØD2	L1
KT 2/1	11401209	SIZE 1	M3 - M12	TF 2	7.5	7.5	36	26	19	45
KT 2/2	11402213	SIZE 2	M8 - M20	TF 2	12.5	12.5	53	26	31	66
KT 3/1	11401309	SIZE 1	M3 - M12	TF 3	7.5	7.5	36	34	19	45
KT 3/2	11402314	SIZE 2	M8 - M20	TF 3	12.5	12.5	53	34	31	70.5
KT 3/3	11403324	SIZE 3	M14 - M33	TF 3	20	20	78	34	48	122
KT 4/1	11401409	SIZE 1	M3 - M12	TF 4	7.5	7.5	36	46	19	45
KT 4/2	11402413	SIZE 2	M8 - M20	TF 4	12.5	12.5	53	46	31	65.5
KT 4/3	11403421	SIZE 3	M14 - M33	TF 4	20	20	78	46	48	107
KT 4/4	11404425	SIZE 4	M22 - M48	TF 4	22.5	22.5	96	46	60	128
KT 5/2	11402513	SIZE 2	M8 - M20	TF 5	12.5	12.5	53	60	31	65.5
KT 5/3	11403519	SIZE 3	M14 - M33	TF 5	20	20	78	60	48	98.5
KT 5/4	11404522	SIZE 4	M22 - M48	TF 5	22.5	22.5	96	60	60	109.5

TAPPING ADAPTOR MODEL QASB
With Safety Clutch



Model	Ordering Number	For Taps		Suitable for KT	ØD	ØD1	ØD2	L1	L3	L4	L5
		Thread	Shanks Ø								
QASB 1	41, 100...	M3 - M12	3.50-11.30	Size 2/1, 3/1, 4/1	32	19	19	17	25	21.5	25
QASB 2	41, 200...	M8 - M20	7-18	Size 2/2, 3/2, 4/2, 5/2	50	30	31	30	31	35	34
QASB 3	41, 300...	M14 - M30	11-28	Size 3/3, 4/3, 5/3	72	48	48	44	41	55.5	45
QASB 4	41, 400...	M22 - M48	18-36	Size 4/4, 5/4	95	60	60	71	61	63	68

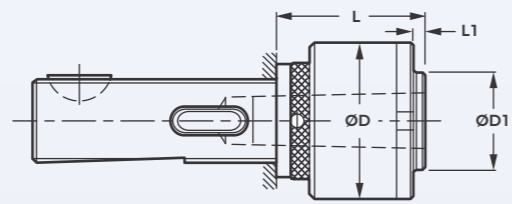
Floating Reamer Holder
MODEL : FH - Tr. & FH - MT



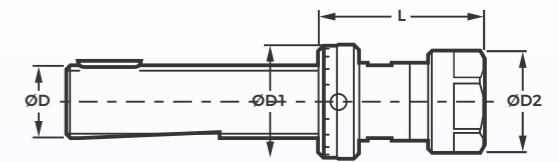
Model	Ordering Number	Shank Size	Female Morse Taper	Float	ØD	ØD1	L
FH1/Tr.16X1.5	77301050	Tr.16x1.5	1	0.5	32	18	113
FH1/Tr.20x2	77301080	Tr.20x2	1	0.5	32	18	113
FH1/Tr.28x2	77301130	Tr.28x2	1	0.5	32	18	113
FH2/Tr.20x2	77302080	Tr.20x2	2	0.5	40	24	132
FH2/Tr.28x2	77302130	Tr.28x2	2	0.5	40	24	132
FH3/Tr.28x2	77303130	Tr.28x2	3	1	50	32	158.5
FH3/Tr.36x2	77303160	Tr.36x2	3	1	50	32	160.5
FH4/Tr.36x2	77304160	Tr.36x2	4	1.5	67	42	196.5
FH4/Tr.48x2	77304200	Tr.48x2	4	1.5	67	42	200.5

Model	Ordering Number	Shank Size	Female Morse Taper	Float	ØD	ØD1	L
FH1/MT1	77101010	MT 1	1	0.5	32	16	106
FH1/MT2	77101020	MT 2	1	0.5	32	16	106
FH2/MT2	77102020	MT 2	2	0.5	40	24	127
FH2/MT3	77102030	MT 3	2	0.5	40	24	128
FH3/MT3	77103030	MT 3	3	0.5	50	32	151.5
FH3/MT4	77103040	MT 4	3	1	50	32	153
FH4/MT4	77104040	MT 4	4	1	67	42	189
FH4/MT5	77104050	MT 5	4	1.5	67	42	189
FH5/MT5	77105050	MT 5	5	1.5	88	58	232
FH5/MT6	77105060	MT 6	5	1.5	88	58	233.5

MODEL FHK / Tr.
With Radial Parallel Float

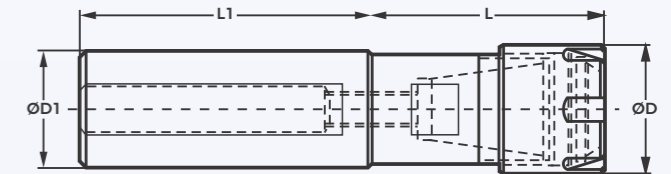


Model	Ordering Number	Suitable Shank	Female Morse Taper	Float Action	ØD	ØD1	L	L1
FHK1/Tr.20x2	78301080	Tr.20x2	1	0.5	40	18	49	5
FHK1/Tr.25x2	78301110	Tr.25x2	1	0.5	40	18	49	5
FHK1/Tr.28x2	78301130	Tr.28x2	1	0.5	40	18	49	5
FHK1/Tr.36x2	78301160	Tr.36x2	1	0.5	40	18	51	5
FHK2/Tr.25x2	78302110	Tr.25x2	2	1	50	26	65	23
FHK2/Tr.28x2	78302130	Tr.28x2	2	1	50	26	48	6
FHK2/Tr.36x2	78302160	Tr.36x2	2	1	50	26	50	6
FHK3/Tr.36x2	78303160	Tr.36x2	3	1	67	42	63	5
FHK3/Tr.48x2	78303200	Tr.48x2	3	1	67	42	67	5
FHK4/Tr.48x2	78304200	Tr.48x2	4	1.5	67	42	72	8



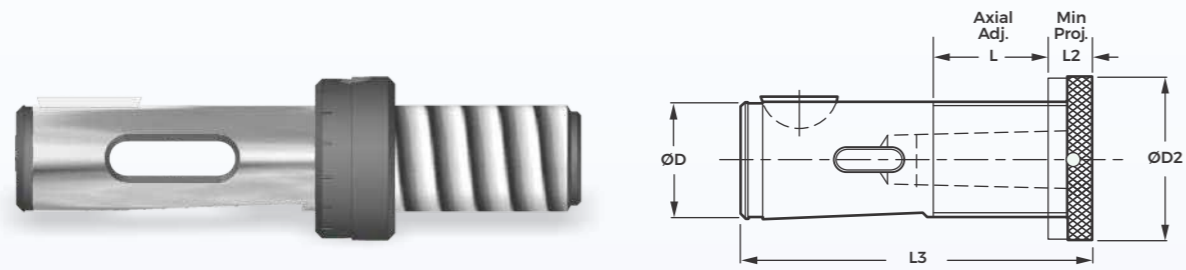
Model	Ordering Number	Shank Size	Female Morse Taper	ØD	ØD2	ØD1	L
Tr.16X1.5/CHE16-30	34050106	ER16	3 - 10	16	28	28	30
Tr.16X1.5/CHE 16-50	34050110	ER16	3 - 10	16	28	28	50
Tr.16X1.5/CHE 20-50	34050210	ER20	3 - 13	16	34	28	50
Tr.20X2/CHE 16-50	34080110	ER16	3 - 10	20	28	32	50
Tr.20X2/CHE 20-60	34080212	ER20	3 - 13	20	34	32	60
Tr.28X2/CHE 20-60	34130212	ER20	3 - 13	28	34	40	60
Tr.28X2/CHE 25-60	34130312	ER25	3 - 16	28	42	40	60

MODEL St. Sh. / CHE



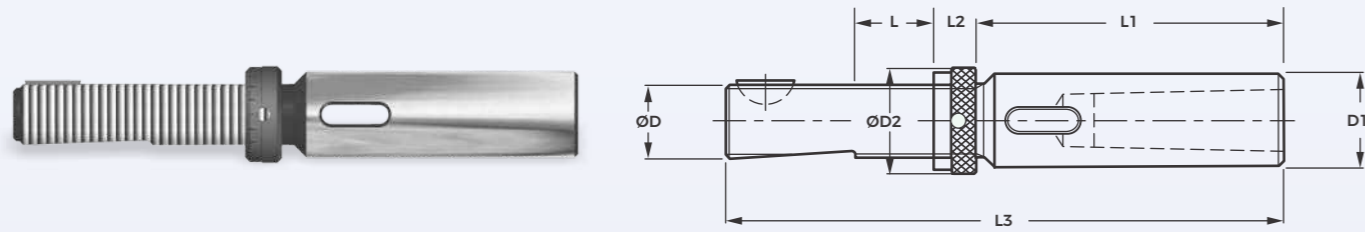
Model	Ordering Number	Suitable ER Collet	Clamping Capacity	ØD	ØD1	L	L1
ST SH 12-CHE 11M-30	875600M06	ER11	2 - 7	16	12	30	50
ST SH 16-CHE 11M-30	875600M06	ER16	2 - 7	16	16	30	60
ST SH 16-CHE 16M-40	875601M08	ER16	3 - 10	22	16	40	60
ST SH 16-CHE 20M-40	875602M08	ER20	3 - 13	28	16	40	60
ST SH 20-CHE 16M-40	875602M08	ER16	3 - 10	22	20	40	75
ST SH 20-CHE 20M-50	875602M10	ER20	3 - 13	28	20	50	75
ST SH 25-CHE 20M-50	875612M10	ER20	3 - 13	28	25	50	75
ST SH 25-CHE 25M-50	875613M10	ER25	3 - 16	35	25	50	75
ST 12 CHE 11 - 30	87540010	ER11	2 - 7	12	19	50	80
ST 12 CHE 16 - 40	87540110	ER16	3 - 10	12	28	50	90
ST 12 CHE 16-40 OAL 140	87543120	ER16	3 - 10	12	28	100	140
ST 16 CHE 16 - 40	87543110	ER16	3 - 10	16	28	50	90
ST 16 CHE 16-40 OAL 140	87543108	ER16	3 - 10	16	28	100	140
ST 20 CHE 16 - 40	87546108	ER16	3 - 10	20	28	50	90
ST 20 CHE 16-40 OAL 140	87546120	ER16	3 - 10	20	28	100	140
ST 16 CHE 20 - 50	87543210	ER20	3 - 13	16	32	50	100
ST 16 CHE 20 - 50 OAL 150	87543220	ER20	3 - 13	16	32	100	150
ST 20 CHE 20 - 50	87546210	ER20	3 - 13	20	32	50	100
ST 20 CHE 20 - 50 OAL 150	87546230	ER20	3 - 13	20	32	100	150
ST 20 CHE 25 - 50	87546310	ER25	3 - 16	20	42	50	100
ST 20 CHE 25 - 50 OAL 150	87546320	ER25	3 - 16	20	42	100	150
ST 25 CHE 25 - 50	87550312	ER25	3 - 16	25	42	60	110
ST 25 CHE 25 - 50 OAL 150	87550320	ER25	3 - 16	25	42	100	150
ST 32 CHE 25 - 50	87555312	ER25	3 - 16	25	42	60	110
ST 32 CHE 32 - 60 OAL 130	87555414	ER32	3 - 20	32	50	70	130

Type D



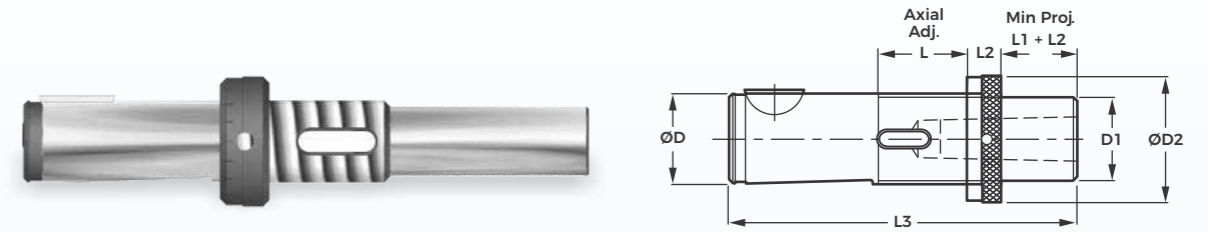
Model	Ordering Number	MT NO.	ØD	ØD2	L	L2	L3	Nut Part No.	Key Part No.
D16X1	75205100	1	16	25	28	12	85	S02050	S01120
D20X1	75208100	1	20	32	28	12	88	S02080	S01130
D25X1	75211100	1	25	37	30	12	95	S02110	S01160
D25X2	75211200	2	25	37	30	12	95	S02110	S01160
D28X1	75213100	1	28	40	30	12	95	S02130	S01160
D28X2	75213200	2	28	40	30	12	95	S02130	S01160
D36X2	75216200	2	36	50	36	14	118	S02160	S01200
D36X3	75216300	3	36	50	36	14	118	S02160	S01200
D48X3	75220300	3	48	67	47	18	144	S02200	S01230
D48X4	75220400	4	48	67	47	18	144	S02200	S01230

Type H



Model	Ordering Number	MT NO.	ØD	ØD1	ØD2	L1	L3	Nut Part No.	Key Part No.
H16X1	75805100	1	16	20	28	79	164	S02050	S01120
H16X2	75805200	2	16	25	28	94	179	S02050	S01120
H20X2	75808200	2	20	28	32	94	182	S02080	S01130
H25X3	75811300	3	25	36	37	117	212	S02110	S01160
H28X3	75813300	3	28	36	40	117	212	S02110	S01160
H36X4	75816400	4	36	48	50	146	264	S02160	S01200

Type F



Model	Ordering Number	MT NO.	ØD	ØD1	ØD2	L1	L3	Nut Part No.	Key Part No.
F16X1X25	75505105	1	16	16	25	25	110	S02050	S01120
F16X1X50	75505110	1	16	16	25	50	135	S02050	S01120
F16X1X75	75505115	1	16	16	25	75	160	S02050	S01120
F16X1X100	75505120	1	16	16	25	100	185	S02050	S01120
F20X1X25	75508105	1	20	17	32	25	113	S02080	S01130
F20X1X50	75508110	1	20	17	32	50	138	S02080	S01130
F20X1X75	75508115	1	20	17	32	75	163	S02080	S01130
F20X1X100	75508120	1	20	17	32	100	188	S02080	S01130
F25X1X25	75511105	1	25	22	37	25	120	S02110	S01160
F25X1X50	75511110	1	25	22	37	50	145	S02110	S01160
F25X1X75	75511115	1	25	22	37	75	170	S02110	S01160
F25X1X100	75511120	1	25	22	37	100	195	S02110	S01160
F25X2X25	75511205	2	25	25	37	25	120	S02110	S01160
F25X2X50	75511210	2	25	25	37	50	145	S02110	S01160
F25X2X75	75511215	2	25	25	37	75	170	S02110	S01160
F25X2X100	75511220	2	25	25	37	100	195	S02110	S01160
F28X1X25	75513105	1	28	25	40	25	120	S02130	S01180
F28X1X50	75513110	1	28	25	40	50	145	S02130	S01180
F28X1X75	75513115	1	28	25	40	75	170	S02130	S01180
F28X1X100	75513120	1	28	25	40	100	195	S02130	S01180
F28X2X25	75513205	2	28	25	40	25	120	S02130	S01180
F28X2X50	75513210	2	28	25	40	50	145	S02130	S01180
F28X2X75	75513215	2	28	25	40	75	170	S02130	S01180
F28X2X100	75513220	2	28	25	40	100	195	S02130	S01180
F36X2X30	75516206	2	36	33	50	30	148	S02160	S01200
F36X2X60	75516212	2	36	33	50	60	178	S02160	S01200
F36X2X90	75516218	2	36	33	50	90	208	S02160	S01200
F36X2X120	75516224	2	36	33	50	120	238	S02160	S01200
F36X3X30	75516306	3	36	33	50	30	148	S02160	S01200
F36X3X60	75516312	3	36	33	50	60	178	S02160	S01200
F36X3X90	75516318	3	36	33	50	90	208	S02160	S01200
F36X3X120	75516324	3	36	33	50	120	238	S02160	S01200
F48X3X40	75520308	3	48	45	67	40	184	S02200	S01230
F48X3X80	75520316	3	48	45	67	80	224	S02200	S01230
F48X3X120	75520324	3	48	45	67	120	264	S02200	S01230
F48X3X160	75520332	3	48	45	67	160	304	S02200	S01230
F48X4X40	75520408	4	48	45	67	40	184	S02200	S01230
F48X4X80	75520416	4	48	45	67	80	224	S02200	S01230
F48X4X120	75520424	4	48	45	67	120	264	S02200	S01230
F48X4X160	75520432	4	48	45	67	160	304	S02200	S01230



Rockwell Cum Brinell Hardness Tester Machine - Without Load Selector

Model
AER
AERB 187.5
AERB 250

Rockwell Cum Brinell Hardness Tester Machine - With Load Selector

Model
AERL
AERBL 187.5
AERBL 250

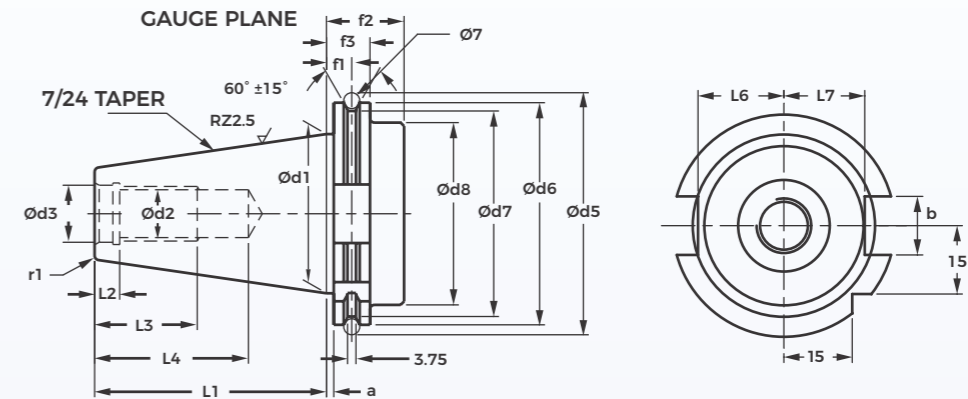


Portable Hardness Tester Machine

Model
PORTABLE HARDNESS TESTER

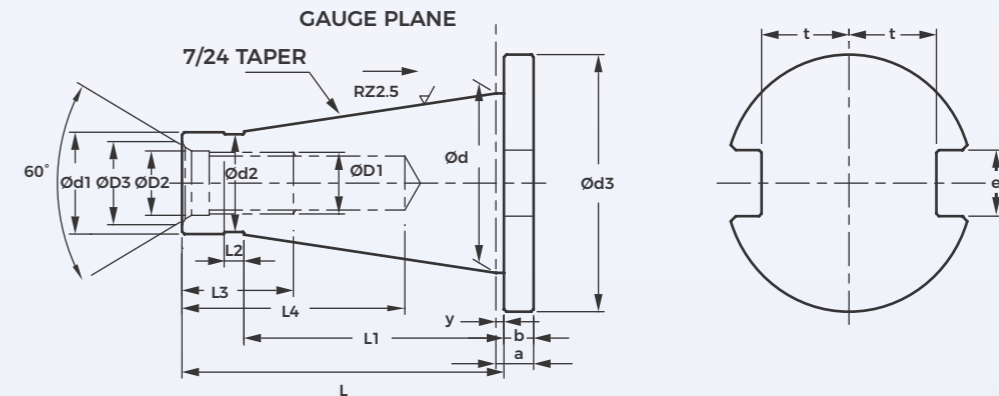
Additional Information

• Packing Charges + Freight + Taxes SGST & CGST OR IGST	• Ex-works : Bileshwarpura
• Insurance at your end	• Terms Of Payment : 100% Against Proforma Invoice NEFT
• Commissioning Charges Extra as per Destination	• Subject to Ahmedabad Jurisdiction



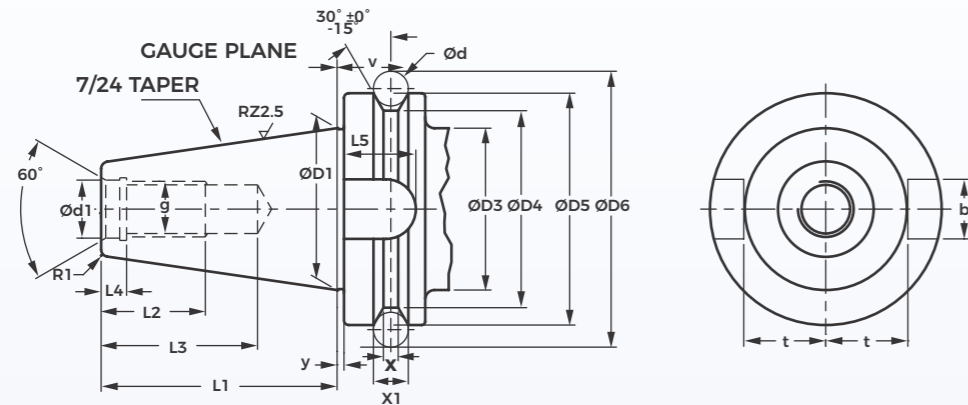
Designation	a 3 0.1	b H12	Ød1	Ød2	Ød3 H7	Ød5 3 0.05	Ød6 -0.1	Ød7 -0.5	Ød8 max	f1 3 0.1
SK30	3.2	16.1	31.75	M12	13	59.3	50	44.3	45	11.1
SK40	3.2	16.1	44.45	M16	17	72.3	63.55	56.25	50	11.1
SK50	3.2	25.7	69.85	M24	25	107.25	97.50	91.25	80	11.1

Designation	f2 min	f3 -0.1	L1 -0.3	L2 +0.5	L3 min	L4 min	L5 -0.3	L6 -0.4	L7 -0.4	r1
SK30	35	19.1	47.8	5.5	24	33.5	15	16.4	19	0.6
SK40	35	19.1	68.4	8.2	32	42.5	18.5	22.8	25	1.2
SK50	35	19.1	101.75	11.5	47	61.5	30	35.5	37.7	2.5



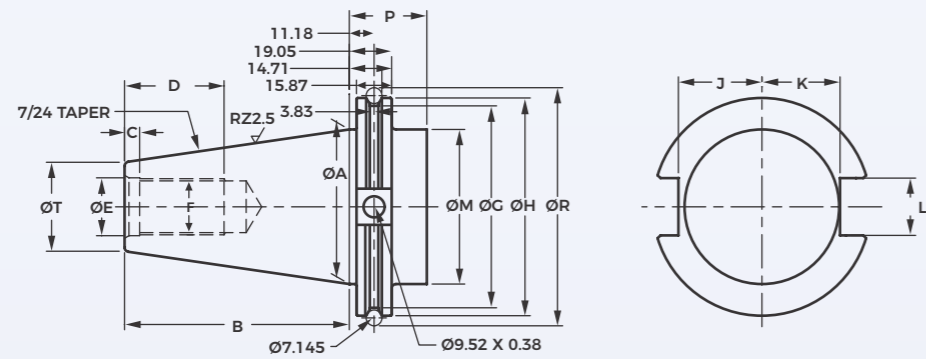
Designation	Ød Basic	Ød1 a10	Ød2	L max	L1	L2	y 30.4	Ød3 a10	a 30.1
ISO30	31.75	17.4	16.5	70	50	3	1.6	50	9.6
ISO40	44.45	25.3	24	95	67	5	1.6	63	11.6
ISO50	69.85	39.6	38	130	105	8	3.2	100/95	15.2

Designation	b	e H12	t max	ØD1	ØD2	ØD3	L3	L4 min
ISO30	8	16.1	16.2	M12	12.5	15.5	24	50
ISO40	10	16.1	22.5	M16	17	19.5	30	70
ISO50	12	25.7	35.3	M24	25	28	45	90



Designation	ØD1	L1 3 0.2	R1 max	L4 +0.5	L2 min	L3	Ød1 H8	g	t -0.2	b H12
BT30	31.75	48.4	0.5	7.0	24	34	12.5	M12	16.3	16.1
BT40	44.45	65.4	1	9.0	30	43	17	M16	22.6	16.1
BT50	69.85	101.8	1	13.0	45	62	25	M24	35.4	25.7

Designation	L5 min	Ød3 -0.5	ØD4	ØD5 h8	ØD6	y 3 0.4	Ød	V -0.1	x	X1 +0.1
BT30	17	32.00	38	46	56.144	2	8	13.6	4	8
BT40	21	44.70	53	63	75.679	2	10	16.6	5	10
BT50	31	70.10	85	100	119.019	3	15	23.2	7	15



Designation	ØA	B 3 0.12	C 3 0.25	D min	ØE +0.38	F UNC-2B	ØG 3 0.25	ØH 30.05
CAT30	31.75	47.62	4.77	25.4	13.106	0.500-13	38.90	46.025
CAT40	44.45	68.24	4.77	28.5	16.281	0.625-11	56.36	63.5
CAT50	69.85	101.60	6.35	44.45	26.187	1.000-8	91.29	98.425

Designation	J -0.38	K -0.38	L 3 0.25	ØM 3 0.12	P Min.	ØR 3 0.05	ØT min. Flat
CAT30	18.669	16.256	16.383	31.75	35.05	55.27	16.51
CAT40	25.019	22.606	16.383	44.45	35.05	72.72	21.844
CAT50	37.719	35.306	25.908	69.85	35.05	107.64	35.052



